

Spice Market + Toasted

ANDOVER FABRICS



Sugar and Spice Quilt designed by: **Candy Hargrove**

Quilt Size: **68½" x 68½"** • Skill Level: **Beginner**

Sugar and Spice

Introducing Andover Fabrics new collection: **SPICE MARKET + TOASTED FABRICS** by Jo Morton

Quilt designed by Candy Hargrove

Quilt finishes 68½" x 68½"

144 Blocks: 7½" x 7½"

Nostalgia for simpler times may prompt you to make this attractive two-block quilt made with period reproductions. Simple Irish Chain and Churn Dash Blocks alternate so that the strong diagonal lines of the brown prints form an interesting overall grid. You can enhance the scrappy look by using light and dark prints in such a way that some blocks show strong contrast and others low contrast.

Fabric Requirements		Yardage	Fabric
Fabric A	outer border	1¾ yards	5864-N
Fabric B	border, corner	⅝ yard	6024-O
Spice Market	all blocks	fat ¼ bundle	
Toasted	all blocks	fat ¼ bundle	
Binding		⅝ yard	6019-O
Backing		4½ yards	5871-N

Cutting Directions

Note: Read assembly directions before cutting patches. All measurements are cut sizes and include ¼" seam allowances. A fat ¼ is an 18" x 20"-22" cut. Borders are cut the exact lengths required plus ¼" seam allowances. WOF designates the width of fabric from selvedge to selvedge (approximately 42" wide).

Note: Yardage is generous to allow you to cut more blocks from a favorite fabric if you wish.

Cutting for One Irish Chain Block:

Light Cut (4) rectangles 2" x 5"
Cut (4) squares 2"

Brown Cut (9) squares 2"

Cutting for One Churn Dash Block:

Light Cut (2) squares 3⅞" for half-square triangles (HST)
Cut (5) squares 2"

Rust/Gold Cut (2) squares 3⅞" for half-square triangles (HST)
Cut (4) squares 2"

Cutting for Entire Quilt:

Fabric A Cut (4) borders 7" x 56", cut lengthwise

Fabric B Cut (2) borders 2" x 56", cut crosswise and pieced
Cut (2) borders 2" x 53", cut crosswise and pieced
Cut (4) squares 7" for border corners

17 Light Cut patches for 1 or 2 Irish Chain Blocks from each (25 blocks total)
Cut patches for 1 or 2 Churn Dash Blocks from each (24 blocks total)

6 Brown Cut patches for 4 or 5 Irish Chain Blocks from each (25 blocks total)

12 Rust/Gold Cut patches for 2 or 3 Churn Dash Blocks from each (24 blocks total)

Binding Cut (7) strips 2½" x WOF

Backing Cut (2) panels 40" x 79", pieced to fit quilt top with overlap on all sides

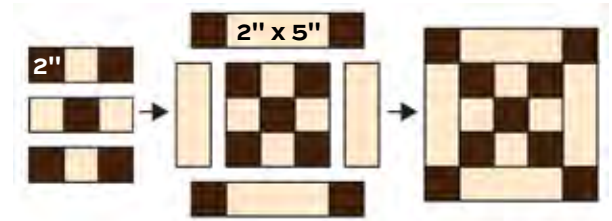
Sugar and Spice Quilt

Making and Assembling the Quilt

1. Select brown print 2" squares and light print 2" squares and rectangles for each Irish Chain Block, making no two blocks alike. Referring to the block diagram, join squares to make the center nine-patch. Sew light rectangles to the sides. Sew brown squares to ends of 2 rectangles and sew to the top and bottom. Make a total of 25 Irish Chain Blocks.
2. The Churn Dash Blocks use half-square triangles (HST) that finish 3" square. Use your favorite method to make HST, or follow these directions. Draw a diagonal line on the wrong side of each light fabric 3 7/8" square (Diagram 1). Place a marked square on a rust or gold fabric square, right sides together. Sew a 1/4" seam on each side of the marked line; cut apart on the marked line. Press open to make pieced HST. Make 4 alike for each block.
3. Referring to the Churn Dash Block diagram, arrange and sew the 4 like HST with 2" squares of the same fabrics to make pieced rows as shown. Join the rows to make a block. Make 24.
4. Referring to the Quilt Diagram, join 4 Irish Chain Blocks alternately with 3 Churn Dash Blocks to make Row 1. Make 4 rows like this. Join 4 Churn Dash Blocks alternately with 3 Irish Chain Blocks to make Row 2. Make 3 rows like this. Join the rows in the order shown.
5. Sew the shorter Fabric C borders to the sides. Sew the longer Fabric C borders to top and bottom.
6. Sew fabric A borders to the sides. Sew Fabric C squares to the ends of remaining borders. Sew to the top and bottom.

Finishing the Quilt

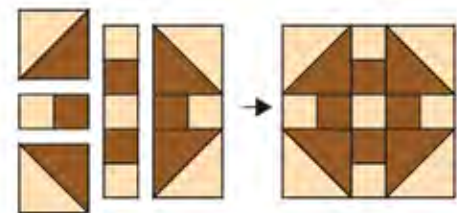
7. Layer the quilt with batting and backing and baste. Quilt in the ditch around borders and block patches. Quilt around the printed motifs in the outer border. Bind to finish the quilt.



Irish Chain Block – Make 25

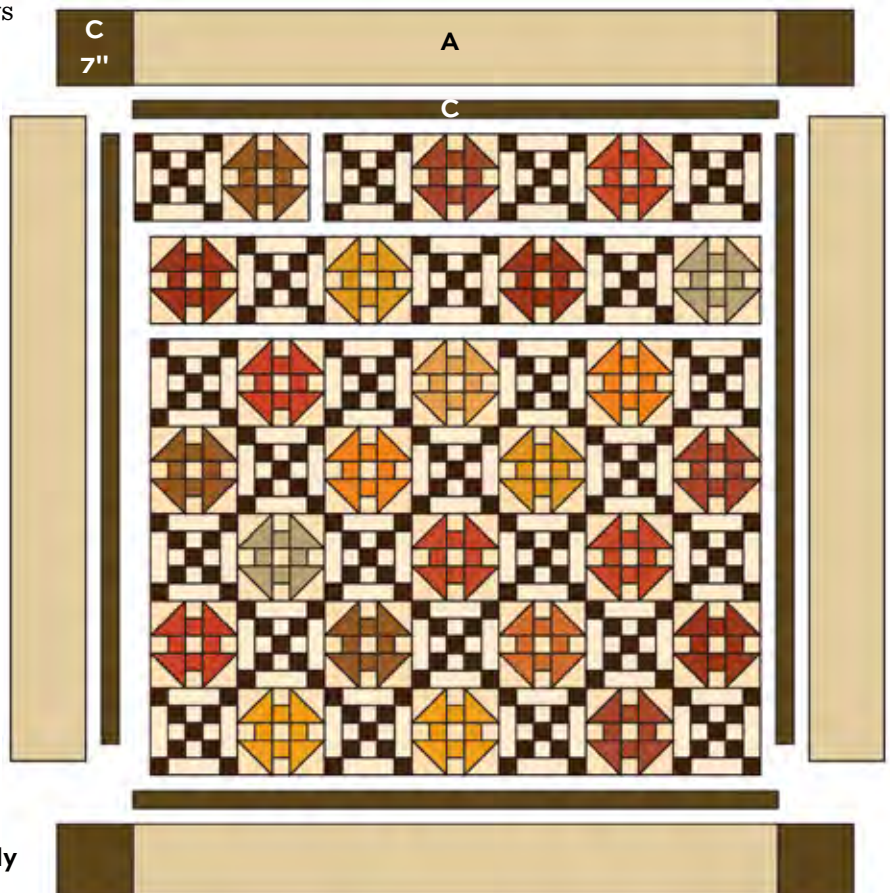


Diagram 1



Churn Dash Block – Make 24

Quilt Assembly



Spice Market + Toasted

JO MORTON



6016-N



6016-O



5864-L



5864-N



6017-O



6017-Y



5865-N



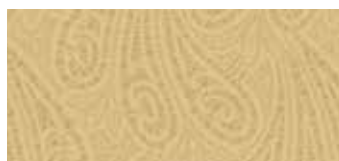
5865-N



6018-N



6018-O



5866-L



5866-N



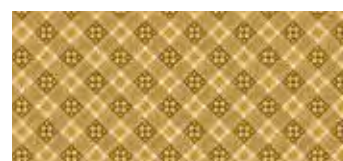
6019-K



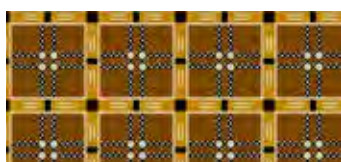
6019-O



5868-L



5868-N



6020-N



6020-Y



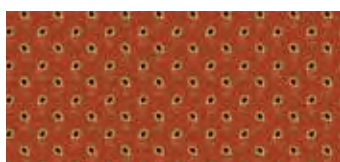
5869-L



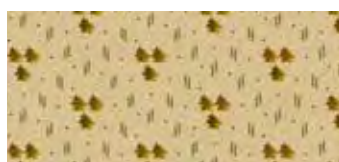
5869-N



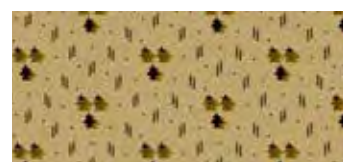
6021-N



6021-R



5870-L



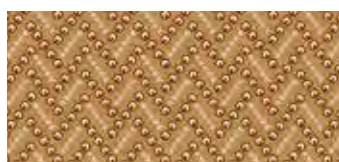
5870-N



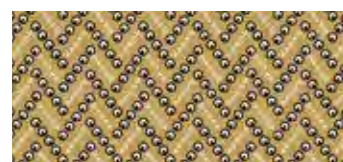
6022-O



6022-R



5871-L



5871-N



6024-LN



6024-N



6024-O



5867-N



5609-L



6023-LN



3997-N



5689-N



5692-NK



5693-NY

All fabrics are used in quilt pattern. Fabrics shown are 50% of actual size.